



23 November 2021

# Port Clearance API Specifications

Version 1.0



## Document Change Logs

Version No.	Change Details	Date
1.0	- Initial version	23 November 2021

## Table of Contents

1	Introduction .....	3
1.1	Objective .....	3
1.2	Use case definition .....	3
1.3	Sequence diagram .....	<b>Error! Bookmark not defined.</b>
2	Port Clearance APIs .....	5
2.1	Notification API .....	5
2.2	Port Clearance Data by FAL Form API .....	8
2.2.1	Port Clearance Data for FAL Form 1 (General Declaration) .....	9
2.2.2	Port Clearance Data for FAL Form 2 (Cargo Declaration) .....	13
2.2.3	Port Clearance Data for FAL Form 3 (Ship Stores Declaration) .....	17
2.2.4	Port Clearance Data for FAL Form 4 (Crew's Effects Declaration) .....	20
2.2.5	Port Clearance Data for FAL Form 5 (Crew List) .....	23
2.2.6	Port Clearance Data for FAL Form 6 (Passenger List) .....	27
2.2.7	Port Clearance Data for FAL Form 7 (Dangerous Goods Manifest) .....	31
2.2.8	Port Clearance Data for FAL Form 8 (Security Report) .....	36
2.2.9	Port Clearance Data for FAL Form 9 (Waste Deliver in Port) .....	43
3	Annex .....	47
3.1	Error Message Structure .....	47
3.2	HTTP Response Code .....	48

# 1 Introduction

## 1.1 Objective

The objective of the digitalOCEANS<sup>TM</sup> Port Clearance API Specifications is to standardise the technical implementation for port clearance related data between data consumers and providers. This would streamline the implementation efforts by port authorities and the industry to enable interoperability between various systems.

Building on the IMO Compendium on Facilitation and Electronic Business, this specification lists the APIs to be implemented for both data consumers and providers to effectively exchange these data elements.

## 1.2 Use case definition

This section describes the use case of the APIs for parties involved in the port clearance process. There are two groups of systems involved in this process – the data source system and the data consumer system. Data source systems refer to any system where port clearance data is available, which may refer to 1) systems that agents use (e.g. trade facilitation platforms) or 2) previous port authorities where port clearance declaration was submitted. The swim lane and sequence diagrams below demonstrates the stakeholders involved and interaction points between them.

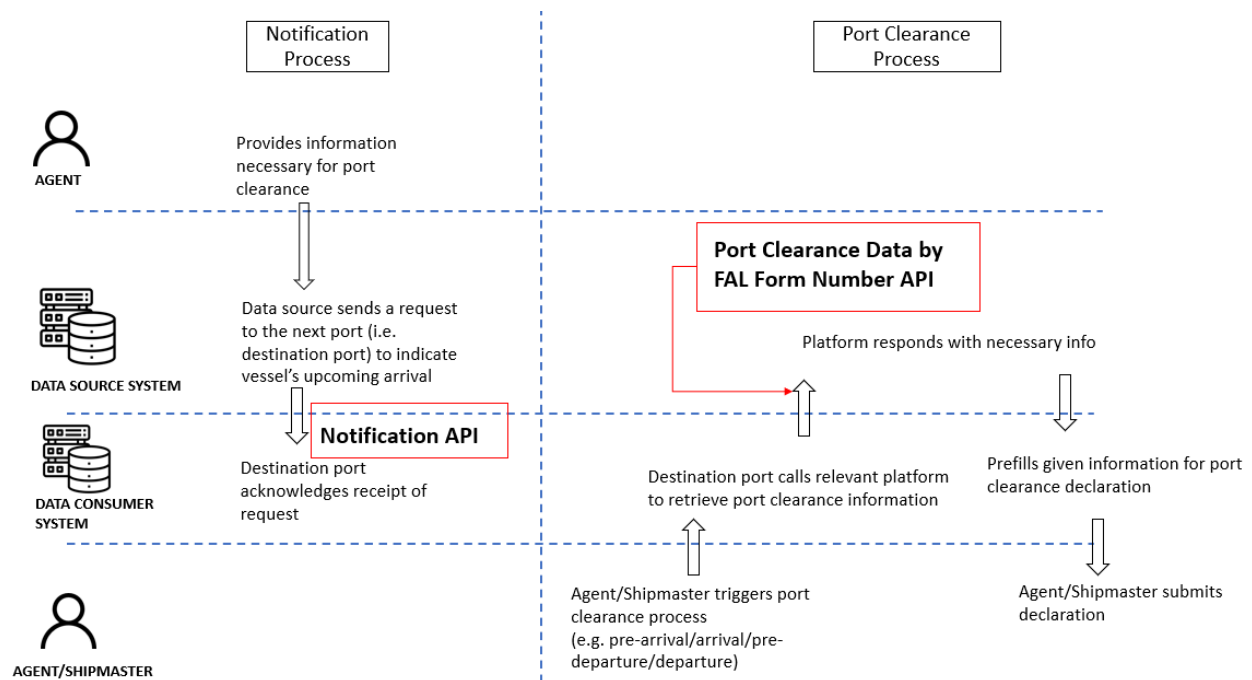


Figure 1. Swim lane diagram – Data flow from shipper to destination port

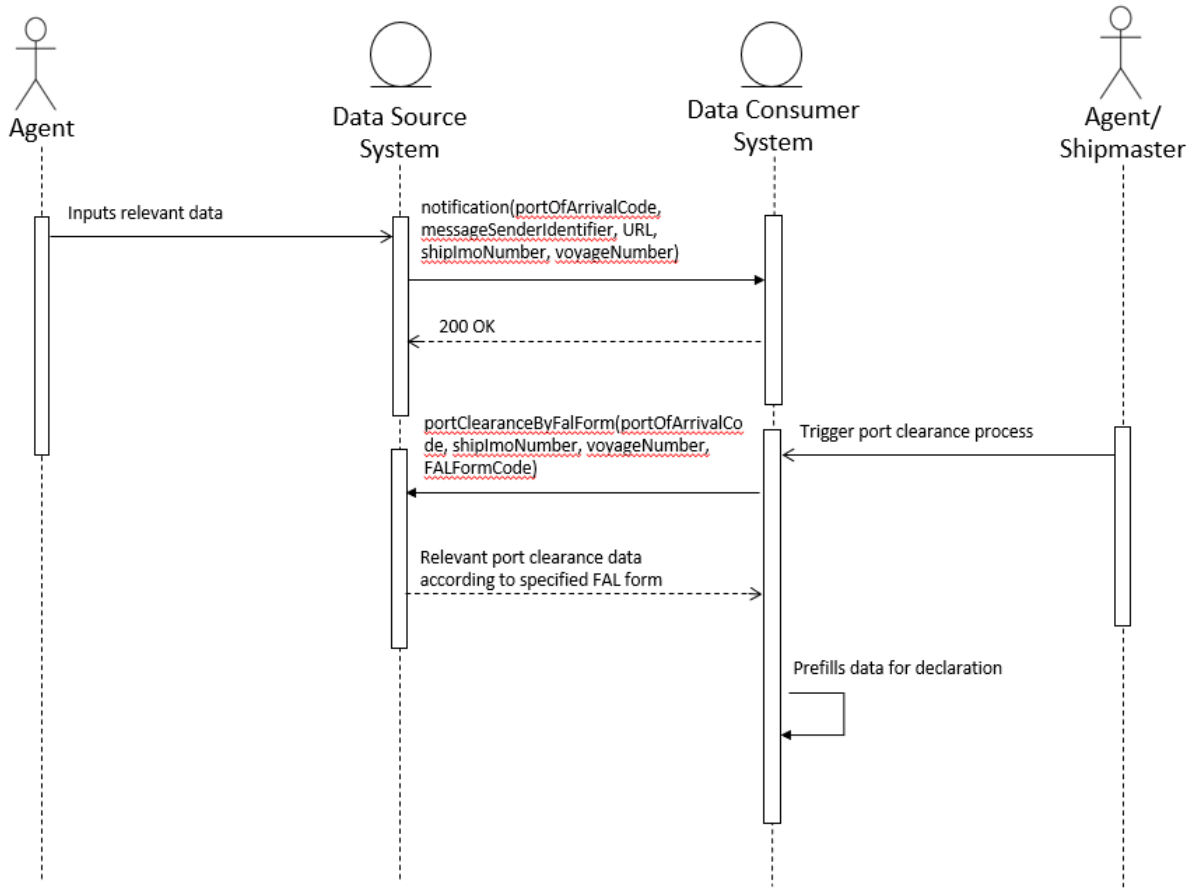


Figure 2. Sequence diagram - Data flow from shipper to destination port

Two groups of APIs are needed to facilitate this – 1) Notification API and 2) Port Clearance Data by FAL Form Number API. The Notification API is mainly used to inform the data consumer of the URL which it can use to call the Port Clearance Data API from. This is necessary as the data consumer does not know the data provider of the concerned vessel. The destination port will store this URL and use it to retrieve port clearance data for the concerned vessel when needed. The flow is described in greater detail in the table below.

<b>Actors</b>	Ship agent/Ship master, Data source system, Data consumer system
<b>Preconditions</b>	<ol style="list-style-type: none"> <li>1) Data is updated in the data source system</li> <li>2) Data source system has to be aware of the Notification API endpoint exposed by the data consumer system.</li> </ol>

<b>Postconditions</b>	Nil
<b>Flow</b>	<p><u>Notification phase</u></p> <ol style="list-style-type: none"> <li>1) Agent provides information necessary for port clearance to data source system (e.g. trade facilitation platform or port authority’s maritime single window).</li> <li>2) Data source system identifies the next port of call and sends a request to the notification API exposed by the data consumer system (e.g. destination port’s maritime single window), sending the request parameters as stated in the <a href="#">Notification API section</a>.</li> <li>3) Data consumer acknowledges request and stores these parameters.</li> </ol> <p><u>Port clearance phase</u></p> <ol style="list-style-type: none"> <li>4) Agent/shipmaster logs into destination port’s system to start the port clearance process.</li> <li>5) Destination port’s system calls the “Port clearance data by FAL form” API using the URL stored previously.</li> <li>6) The data source system responds with requested information.</li> <li>7) Destination port’s system prefills data in port clearance declaration form.</li> <li>8) Agent/shipmaster verifies and submits port clearance.</li> </ol>

Table 1. Use case definition – Retrieve port clearance data for vessel

## 2 Port Clearance APIs

The following sections specifies the structures of APIs and there are three components to note when implementing these specifications:

1. URL structure
2. Request parameters
3. Response details

The data elements listed for the APIs should be used in conjunction with the IMO Compendium for further clarity.

### 2.1 Notification API

This is to be developed and exposed by the data consumer and called by the data source system.

<b>URL</b>	https://<domain>/notification/notificationdetails?portOfArrival={portOfArrivalCode}&shipimo={shipImoNumber}&portCallUniqueIdentifier={portCallUniqueIdentifier}&URL={URL}&messageSenderId={messageSenderId}&messageSenderRoleCode={messageSenderRoleCode}
<b>Description</b>	Notifying the data consumer of the URL and other relevant parameters that it can use to call the Port Clearance Data API.

**Request Details**

Parameters	IMO Data Number	Name	Mandatory	Description	Format	Sample
	IMO0108	portOfArrivalCode	Yes	The UN/LOCODE representing the port where the ship arrives.	an..5	SGSIN
	IMO0140	shipImoNumber	Yes	Ship unique identifier.	n..7	8814275
	N/A	portCallUniqueIdentifier	Yes	The data source's unique identifier to determine the relevant port call.  <i>Note: This does not have to be universally identifiable, as it will only be used by the data consumer as a request parameter back to the data source. The data source system has to ensure that it is able to identify a specific port call of a vessel based on this subsequently.</i>	N/A	1234
	N/A	URL	Yes	URL of the API exposed by the data source that will	NA	abc.com

				<p>be used to retrieve port clearance data.</p> <p><i>Note: This will be used by the data consumer to replace the &lt;domain&gt; placeholder in the Port Clearance API specification.</i></p>		
	IMO0082	message SenderIdentifier	No	<p>Identifier of the party transmitting the message.</p> <p>If data sent from a port, the identifier will be the UN/LOCODE of the port.</p> <p>For other systems, it will be the name of the system itself.</p> <p><i>Note: This does not have to be universally unique, as this is used for logging purposes in the event that the URL does not intuitively convey the organisation's identity.</i></p>	an..17	NLRMTM
	MO0128	message SenderRoleCode	No	<p>Role of the party transmitting the message based on EDIFACT Codes 3035.</p>	an..3	VQ

Response Details					
IMO Data Number	Name	Mandatory	Description	Format	Sample
N/A	errors	Yes	<p>A list showing error in request parameters, with error messages.</p> <p>Refer to the section on <a href="#">Error Message Structure</a> for more information.</p>	N/A	N/A



**SAMPLE REQUEST & RESPONSE**

<b>Curl Request</b>	<pre>curl -X GET --url 'https://abc.com/notification/notificationdetails?portOfArrival=SGSIN&amp;shipimo=8814275&amp;portCallUniqueIdentifier=1234&amp;URL=abc.com&amp;messageSenderId=NLRTM&amp;messageSenderIdRoleCode=VQ'</pre>
<b>Response</b>	Refer to the section on <a href="#">Error Message Structure</a> for the sample response.

## 2.2 Port Clearance Data by FAL Form API

This is to be developed and exposed by the data producer and called by the data consumer.

Port clearance data is split into the various IMO FAL forms as listed in the IMO Compendium. This allows consumers to call the relevant APIs that contains data required for their port clearance declaration. Note that parameters will be the same for all the APIs.

Currently, this document specifies the API design for the following FAL forms:

1. General Declaration
2. Cargo Declaration
3. Ship's Stores Declaration
4. Crew's Effects Declaration
5. Crew List
6. Passenger List
7. Dangerous Goods Manifest
8. Security Report
9. Waste Delivery in Port (MEPC.1/Circ.644/Rev.1)

## 2.2.1 Port Clearance Data for FAL Form 1 (General Declaration)

<b>URL</b>	<domain>/portclearance/form/FALForm1?portOfArrival={portOfArrivalCode}&shipimo={shipImoNumber}&portCallUniqueIdentifier={portCallUniqueIdentifier}					
<b>Description</b>	Receiving data regarding General Declaration (IMO Compendium FAL Form 1) for the given vessel and port call.					
Request Details						
Parameters	IMO Data Number	Name	Mandatory	Description	Format	Sample
	IMO0108	portOfArrivalCode	Yes	The UN/LOCODE representing the port where the ship arrives.	an..5	SGSIN
	IMO0140	shipImoNumber	Yes	Ship unique identifier.	n..7	8814275
	N/A	portCallUniqueIdentifier	Yes	The data producer's unique identifier to determine the relevant port call.	N/A	1234

Response Details				
IMO Data Number	Name	Mandatory	Description	Format
IMO0001	agentCity	No	The city address of the referenced agent at port. The city address of the referenced agent at port.	an..35
IMO0002	agentContact Name	No	The agent's employee contact name. The agent's employee contact name.	a..70
IMO0003	agentCountry Code	No	A code representing the country address of the referenced agent at port.	a..2

IMO0004	agentCountrySubDivisionName	No	The country sub-division (e.g. state) of the referenced agent at port.	an..35
IMO0006	agentEmail	No	The email address for the referenced agent at port.	an..50
IMO0007	agentIdentificationNumber	No	The recognized identification number used by the ship's agent at the port of notification.	an..17
IMO0008	agentLandlineNumber	No	The landline telephone number for the referenced agent at port.	an..50
IMO0009	agentMobileNumber	No	The mobile number for the referenced agent at port	an..50
IMO0010	agentName	No	The name of the agent at the port of arrival.	an.70
IMO0011	agentPostcode	No	An alphanumerical code representing the postal area of the referenced agent at port.	an..9
IMO0012	agentStreetAndNumberPOBox	No	The postal delivery point such as street and number or post office box of the referenced agent at port.	an..256
IMO0013	arrivalDepartureCode	No	A code in the message to show whether the information is submitted for the ship arrival or departure.	a..1
IMO0014	authenticationDate	No	The date of authentication.	an..35
IMO0016	authenticatorName	No	The name of the person attesting to the validity of the transmitted information.	an..70
IMO0019	cargoBriefDescription	No	A description of the type of cargo carried on the ship in general terms.	an..256
IMO0063	dateAndTimeOfArrivalActual	No	The date and time the ship arrives at the port of arrival.	an..35
IMO0064	dateAndTimeOfArrivalEstimated	No	The date and time the ship is estimated to arrive at the port of arrival.	an..35

IMO0065	dateAndTimeOfDepartureActual	No	The date and time the ship departs from the port of departure.	an..35
IMO0066	dateAndTimeOfDepartureEstimated	No	The date and time the ship is estimated to depart from the port of departure.	an..35
IMO0075	lastPortOfCallName	No	The name and country of the port immediately previous to the port of arrival.	an..256
IMO0076	lastPortOfCallCode	No	The code representing the port immediately previous to the port of arrival.	an..5
IMO0083	nameOfMaster	No	The name of the person in charge of the ship.	an..70
IMO0084	nextPortOfCallCoded	No	The port immediately subsequent to the port of departure.	an..5
IMO0085	nextPortOfCallName	No	The name and country of the port immediately subsequent to the port of departure.	an..256
IMO0086	numberOfCrew	No	The count of persons actually employed for duties on board during a voyage in the working or service of a ship and included in the crew list.	n..4
IMO0087	numberOfPassengers	No	The count of persons on board the ship who are passengers as defined by SOLAS.	n..4
IMO0108	portOfArrivalCoded	No	The code representing the port where the ship arrives.	an..5
IMO0109	portOfArrivalName	No	A name and country of the port where the ship arrives.	an..256
IMO0111	portOfDepartureCoded	No	The code representing the port from which the ship departs.	an..5
IMO0112	portOfDepartureName	No	A name and country of the port from which the ship departs.	an..256
IMO0126	previousPortOfCallName	No	A list of the names and country of previous port of calls of the vessel journey.	Array an..35

IMO0127	previousPortOfCallCoded	No	A list of codes representing previous port of calls of the vessel journey.	Array an..5
IMO0128	authenticatorRoleCoded	No	A code providing the role of the person attesting to the validity of the transmitted information.	Array an..3
IMO0136	shipCallSign	No	A unique ship's identification used primarily for radio communications shown on the ship's IMO certificates.	an..7
IMO0138	shipFlagStateCoded	No	The code representing the nationality of the ship shown on its IMO ship's certificate.	a..2
IMO0139	shipGrossTonnage	No	The gross tonnage shown on the ship's International Tonnage Certificate or other document issued by the Flag State or Recognized Organization.	an..14,3
IMO0140	shipImoNumber	No	The unique ship identification number shown on its IMO ship's certificate.	an..7
IMO0142	shipName	No	The ship's name shown on the IMO ship's certificate.	an..70
IMO0143	shipNetTonnage	No	The net tonnage shown on the ship's International Tonnage Certificate or other document issued by the Flag State or Recognized Organization.	an..14,3
IMO0145	shipRegistryIssueDate	No	The date of issue shown on the Certificate of Registry.	an..35
IMO0146	shipRegistryNumber	No	The unique alphanumeric identifier assigned to the Certificate of Registry by the issuing nation for tracking purposes.	an..35
IMO0147	shipRegistryPortCoded	No	A code representing the port of registry shown on the IMO ship certificate.	an..5
IMO0148	shipRegistryPortName	No	The name and country for the Port of Registry shown on the IMO ship certificate.	an..256
IMO0160	shipTypeCoded	No	The type of the ship shown on its IMO ship's certificate.	an..4

IMO0168	subsequentPortOfCallName	No	The name and country of a scheduled subsequent port of call.	Array an..256
IMO0169	subsequentPortOfCallCode	No	A code representing a subsequent port of call.	Array an..5
IMO0191	voyageNumber	No	An operator-assigned reference code for the ship's voyage.	an..17
IMO0196	remarks	No	Statement of any other information relevant to ship arrival, stay or departure.	an..512

### SAMPLE REQUEST & RESPONSE

<b>Curl Request</b>	<pre>curl -X GET --url 'https://abc.com/portclearance/form/FALForm1?portOfArrival=SGSIN&amp;shipimo=8814275&amp;portCallUniqueIdentifier=1234'</pre>
<b>Response</b>	<pre>{   "agentCity": "Singapore",   "agentContactName": "Peter",   ....etc. }</pre>

### 2.2.2 Port Clearance Data for FAL Form 2 (Cargo Declaration)

<b>URL</b>	https://<domain>/portclearance/form/FALForm2?portOfArrival={portOfArrivalCode}&shipimo={shipImoNumber}&portCallUniqueIdentifier={portCallUniqueIdentifier}					
<b>Description</b>	Receiving data regarding Cargo Declaration (IMO Compendium FAL Form 2) for the given vessel and port call.					
<b>Request Details</b>						
	<b>IMO Data Number</b>	<b>Name</b>	<b>Mandatory</b>	<b>Description</b>	<b>Format</b>	<b>Sample</b>

<b>Parameters</b>	IMO0108	portOfArrivalCode	Yes	The UN/LOCODE representing the port where the ship arrives.	an..5	SGSIN
	IMO0140	shipImoNumber	Yes	Ship unique identifier.	n..7	8814275
	N/A	portCallUniqueIdentifier	Yes	The data producer's unique identifier to determine the relevant port call.	N/A	1234

<b>Response Details</b>				
<b>IMO Data Number</b>	<b>Name</b>	<b>Mandatory</b>	<b>Description</b>	<b>Format</b>
IMO0002	agentContactName	No	The agent's employee contact name.	an..70
IMO0007	agentIdentificationNumber	No	The recognized identification number used by the ship's agent at the port of notification.	an..17
IMO0010	agentName	No	The name of the agent at the port of arrival.	an..70
IMO0013	arrivalDepartureCode	No	A code in the message to show whether the information is submitted for the ship arrival or departure.	a..1
IMO0014	authenticationDate	No	The date of authentication.	an..35
IMO0016	authenticatorName	No	The name of the person attesting to the validity of the transmitted information.	an..70
IMO0017	authenticatorPartyIdentificationNumber	No	An identifying number, such as an agent identifier, of the party attesting to the validity of the transmitted information.	an..17

IMO0021	transportEquipmentIdentificationNumber	No	Marks (letters and/or numbers) which identify a transport equipment (e.g. containers, semi-trailers, swap bodies).	Array, each element n..17
IMO0022	cargoItemDescriptionOfGoods	No	A description of the referenced packaged cargo.	Array, each element n..256
IMO0023	cargoItemGrossVolume	No	A measure of the gross volume, normally calculated by multiplying the maximum length, width and height of the cargo item.	Array, each element n..16,6
IMO0024	cargoItemGrossWeight	No	The combined weight or mass of the referenced packaged cargo and its packaging from the shipping data.	Array, each element n..16,6
IMO0025	cargoItemHsCode	No	The standardized, international commodity code from the Harmonized Commodity Description and Coding System (HS) for the packaged cargo being reported.	Array, each element n..18
IMO0026	cargoItemMarksAndNumbers	No	An alphanumeric or symbolic identifier assigned by the shipper as a means to track cargo not carried in bulk.	Array, each element n..512
IMO0028	cargoItemNumberOfPackages	No	A count of the type of package reported for the referenced cargo.	Array, each element n..8
IMO0029	cargoItemPackageTypeCoded	No	A code representing the type of package used for the referenced cargo.	Array, each element n..2



IMO0077	measurementUnitCoded	No	A code representing the units of measured for a referenced quantity on board, such as crew's effects, ship's stores, and cargo.	Array, each element an..3
IMO0083	nameOfMaster	No	The name of the person in charge of the ship.	an..70
IMO0113	portOfDischargeCoded	No	The code representing the port of discharge for the referenced cargo.	an..5
IMO0114	portOfDischargeName	No	The name and country of the port of discharge for the referenced cargo.	an..256
IMO0117	portOfLoadingCoded	No	The code representing the port of loading for the referenced cargo.	an..5
IMO0118	portOfLoadingName	No	The name and country of the port where the cargo was loaded on board the ship.	an..256
IMO0128	authenticatorRoleCoded	No	A code providing the role of the person attesting to the validity of the transmitted information.	an..3
IMO0138	shipFlagStateCoded	No	The code representing the nationality of the ship shown on its IMO ship's certificate.	a..2
IMO0140	shipImoNumber	No	The unique ship identification number shown on its IMO ship's certificate.	an..7
IMO0141	shipSatelliteServiceNumber	No	The unique recognized mobile satellite service call number assigned to the ship by the operator and recorded in the operator's ship directory where provided.	n..14
IMO0142	shipName	No	The ship's name shown on the IMO ship's certificates.	an..70
IMO0170	transportContractNumber	No	A reference number to identify a document evidencing a transport contract (e.g. Bill of Lading).	an..70
IMO0191	voyageNumber	No	An operator-assigned reference code for the ship's voyage.	an..17

### SAMPLE REQUEST & RESPONSE

<b>Curl Request</b>	<pre>curl -X GET --url 'https://abc.com/portclearance/form/FALForm2?portOfArrival=SGSIN&amp;shipimo=8814275&amp;portCallUniqueIdentifier=1234'</pre>
<b>Response</b>	<pre>{   "agentCity": "Singapore",   "agentContactName": "Peter",   ....etc. }</pre>

### 2.2.3 Port Clearance Data for FAL Form 3 (Ship Stores Declaration)

<b>URL</b>	https://<domain>/portclearance/form/FALForm3?portOfArrival={portOfArrivalCode}&shipimo={shipImoNumber}&portCallUniqueIdentifier={portCallUniqueIdentifier}					
<b>Description</b>	Receiving data regarding Ship Stores Declaration (IMO Compendium FAL Form 3) for the given vessel and port call.					
<b>Request Details</b>						
<b>Parameters</b>	<b>IMO Data Number</b>	<b>Name</b>	<b>Mandatory</b>	<b>Description</b>	<b>Format</b>	<b>Sample</b>
	IMO0108	portOfArrivalCode	Yes	The UN/LOCODE representing the port where the ship arrives.	an..5	SGSIN
	IMO0140	shipImoNumber	Yes	Ship unique identifier.	n..7	8814275
	N/A	portCallUniqueIdentifier	Yes	The data producer's unique identifier to determine the relevant port call.	N/A	1234

--	--	--	--	--	--	--

Response Details				
IMO Data Number	Name	Mandatory	Description	Format
IMO0002	agentContact Name	No	The agent's employee contact name.	an..70
IMO0007	agentIdentificationNumber	No	The recognized identification number used by the ship's agent at the port of notification.	an..17
IMO0010	agentName	No	The name of the agent at the port of arrival.	an..70
IMO0013	arrivalDepart ureCode	No	A code in the message to show whether the information is submitted for the ship arrival or departure.	a..1
IMO0014	authenticationDate	No	The date of authentication.	an..35
IMO0015	authenticator Location	No	The location of the person when submitting the security-related information.	an..17
IMO0016	authenticator Name	No	The name of the person attesting to the validity of the transmitted information.	an..70
IMO0063	dateAndTime OfArrivalActual	No	The date and time the ship arrives at a specified location, ATA.	an..35
IMO0064	dateAndTime OfArrivalEstimated	No	The date and time the ship is estimated to arrive at a specified location, ETA.	an..35
IMO0065	dateAndTime OfDepartureActual	No	The date and time the ship departs from a specified location, ATD.	an..35
IMO0066	dateAndTime OfDepartureEstimated	No	The date and time the ship is estimated to depart from a specified location, ETD.	an..35

IMO0075	lastPortOfCall Name	No	The name and country of the port immediately previous to the port of arrival.	an..256
IMO0076	lastPortOfCall Coded	No	The code representing the port immediately previous to the port of arrival.	an..5
IMO0077	measurement UnitCoded	No	A code representing the units of measured for a referenced quantity on board, such as crew's effects, ship's stores, and cargo.	an..3
IMO0084	nextPortOfCa llCoded	No	The port immediately subsequent to the port of departure.	an..5
IMO0085	nextPortOfCa llName	No	The name and country of the port immediately subsequent to the port of departure.	an..256
IMO0088	numberOfPer sonsOnBoard	No	The total number of persons on board the ship including crew and passengers.	n..4
IMO0108	portOfArrival Coded	No	The code representing the port where the ship arrives.	an..5
IMO0109	portOfArrival Name	No	A name and country of the port where the ship arrives.	an..256
IMO0111	portOfDepart ureCoded	No	The code representing the port from which the ship departs.	an..5
IMO0112	portOfDepart ureName	No	A name and country of the port from which the ship departs.	an..256
IMO0123	portPeriodOf Stay	No	The scheduled duration of stay in the port of arrival in days.	an..35
IMO0128	authenticator RoleCoded	No	A code providing the role of the person attesting to the validity of the transmitted information.	an..3
IMO0136	shipCallSign	No	A unique ship's identification used primarily for radio communications shown on the ship's IMO certificates.	an..7
IMO0138	shipFlagState Coded	No	The code representing the nationality of the ship shown on its IMO ship's certificate.	a..2
IMO0140	shipImoNumb er	No	The unique ship identification number shown on its IMO ship's certificate.	an..7
IMO0142	shipName	No	The ship's name shown on the IMO ship's certificates.	an..70

IMO0154	shipStoresArticleName	No	The name of the referenced ship stores article.	an..512
IMO0155	shipStoresArticleCoded	No	A code representing the referenced ship stores article.	an..18
IMO0156	shipStoresLocationOnboard	No	A description of the location on the ship of the referenced stores article.	an..256
IMO0158	shipStoresQuantityOnboard	No	The number, count or amount of an article of the referenced ship stores.	n..16,6
IMO0191	voyageNumber	No	An operator-assigned reference code for the ship's voyage.	an..17

### SAMPLE REQUEST & RESPONSE

<b>Curl Request</b>	<pre>curl -X GET --url 'https://abc.com/portclearance/form/FALForm3?portOfArrival=SGSIN&amp;shipimo=8814275&amp;portCallUniqueIdentifier=1234'</pre>
<b>Response</b>	<pre>{   "agentCity": "Singapore",   "agentContactName": "Peter",   ....etc. }</pre>

### 2.2.4 Port Clearance Data for FAL Form 4 (Crew's Effects Declaration)

<b>URL</b>	https://<domain>/portclearance/form/FALForm4?portOfArrival={portOfArrivalCode}&shipimo={shipImoNumber}&portCallUniqueIdentifier={portCallUniqueIdentifier}					
<b>Description</b>	Receiving data regarding Crew's Effects Declaration (IMO Compendium FAL Form 4) for the given vessel and port call.					
<b>Request Details</b>						
	<b>IMO Data Number</b>	<b>Name</b>	<b>Mandatory</b>	<b>Description</b>	<b>Format</b>	<b>Sample</b>

<b>Parameters</b>	IMO0108	portOfArrivalCode	Yes	The UN/LOCODE representing the port where the ship arrives.	an..5	SGSIN
	IMO0140	shipImoNumber	Yes	Ship unique identifier.	n..7	8814275
	N/A	portCallUniqueIdentifier	Yes	The data producer's unique identifier to determine the relevant port call.	N/A	1234

<b>Response Details</b>				
<b>IMO Data Number</b>	<b>Name</b>	<b>Mandatory</b>	<b>Description</b>	<b>Format</b>
IMO0002	agentContactName	No	The agent's employee contact name.	an..70
IMO0007	agentIdentificationNumber	No	The recognized identification number used by the ship's agent at the port of notification.	an..17
IMO0010	agentName	No	The name of the agent at the port of arrival.	an..70
IMO0014	authenticationDate	No	The date of authentication.	an..35
IMO0016	authenticatorName	No	The name of the person attesting to the validity of the transmitted information.	an..70
IMO0037	crewEffectsDescriptionCode	No	A code representing the type of the referenced crew's effects.	an..3
IMO0039	crewEffectsQuantityOnboard	No	The quantity or count of the type of the referenced crew's effects.	n..16,6
IMO0040	crewEffectsDescription	No	A description of the type of the referenced crew's effects.	an..256

IMO0041	crewEffectsSequenceNumber	No	A number representing the order of the referenced crew's effects in a list.	n..5
IMO0042	crewmemberRankOrRatingName	No	The description of the referenced crewmember's rank or rating on the ship.	an..70
IMO0043	crewmemberRankOrRatingCoded	No	A code representing the referenced crewmember's rank or rating on the ship.	an..5
IMO0077	measurementUnitCoded	No	A code representing the units of measured for a referenced quantity on board, such as crew's effects, ship's stores, and cargo.	an..3
IMO0098	personFamilyName	No	The family name of the referenced person.	an..70
IMO0100	personGivenName	No	The given name of the referenced person.	an..70
IMO0128	authenticatorRoleCoded	No	A code providing the role of the person attesting to the validity of the transmitted information.	an..3
IMO0136	shipCallSign	No	A unique ship's identification used primarily for radio communications shown on the ship's IMO certificates.	an..7
IMO0138	shipFlagStateCoded	No	The code representing the nationality of the ship shown on its IMO ship's certificate.	a..2
IMO0140	shipImoNumber	No	The unique ship identification number shown on its IMO ship's certificate.	an..7
IMO0142	shipName	No	The ship's name shown on the IMO ship's certificates.	an..70
IMO0191	voyageNumber	No	An operator-assigned reference code for the ship's voyage.	an..17

### SAMPLE REQUEST & RESPONSE

<b>Curl Request</b>	<pre>curl -X GET --url 'https://abc.com/portclearance/form/FALForm4?portOfArrival=SGSIN&amp;shipimo=8814275&amp;portCallUniqueIdentifier=1234'</pre>
---------------------	--

<b>Response</b>	<pre> {   "agentCity": "Singapore",   "agentContactName": "Peter",   ....etc. } </pre>
-----------------	--

### 2.2.5 Port Clearance Data for FAL Form 5 (Crew List)

<b>URL</b>	https://<domain>/portclearance/form/FALForm5?portOfArrival={portOfArrivalCode}&shipimo={shipImoNumber}&portCallUniqueIdentifier={portCallUniqueIdentifier}					
<b>Description</b>	Receiving data regarding Crew List (IMO Compendium FAL Form 5) for the given vessel and port call.					
<b>Request Details</b>						
<b>Parameters</b>	<b>IMO Data Number</b>	<b>Name</b>	<b>Mandatory</b>	<b>Description</b>	<b>Format</b>	<b>Sample</b>
	IMO0108	portOfArrivalCode	Yes	The UN/LOCODE representing the port where the ship arrives.	an..5	SGSIN
	IMO0140	shipImoNumber	Yes	Ship unique identifier.	n..7	8814275
	N/A	portCallUniqueIdentifier	Yes	The data producer's unique identifier to determine the relevant port call.	N/A	1234



Response Details				
IMO Data Number	Name	Mandatory	Description	Format
IMO0002	agentContact Name	No	The agent's employee contact name.	an..70
IMO0007	agentIdentificationNumber	No	The recognized identification number used by the ship's agent at the port of notification.	an..17
IMO0010	agentName	No	The name of the agent at the port of arrival.	an..70
IMO0013	arrivalDepartureCode	No	A code in the message to show whether the information is submitted for the ship arrival or departure.	a..1
IMO0014	authenticationDate	No	The date of authentication.	an..35
IMO0016	authenticatorName	No	The name of the person attesting to the validity of the transmitted information.	an..70
IMO0042	crewmemberRankOrRatingName	No	The description of the referenced crewmember's rank or rating on the ship.	an..70
IMO0043	crewmemberRankOrRatingCoded	No	A code representing the referenced crewmember's rank or rating on the ship.	an..5
IMO0044	personOnBoardSequenceNumber	No	A number indicating the order of the referenced person in the person on board list.	n..5
IMO0063	dateAndTimeOfArrivalActual	No	The date and time the ship arrives at a specified location, ATA.	an..35
IMO0064	dateAndTimeOfArrivalEstimated	No	The date and time the ship is estimated to arrive at a specified location, ETA.	an..35
IMO0065	dateAndTimeOfDepartureActual	No	The date and time the ship departs from a specified location, ATD.	an..35

IMO0066	dateAndTimeOfDepartureEstimated	No	The date and time the ship is estimated to depart from a specified location, ETD.	an..35
IMO0075	lastPortOfCallName	No	The name and country of the port immediately previous to the port of arrival.	an..256
IMO0076	lastPortOfCallCoded	No	The code representing the port immediately previous to the port of arrival.	an..5
IMO0096	personCountryOfBirthCode	No	The code representing the referenced person's country of birth as shown on the person's identity document.	a..2
IMO0097	personDateOfBirth	No	The referenced person's date of birth as shown on the person's identity document.	an..35
IMO0098	personFamilyName	No	The family name of the referenced person.	an..70
IMO0099	personGenderCoded	No	A code representing the gender of the referenced person.	an..3
IMO0100	personGivenName	No	The given name of the referenced person.	an..70
IMO0101	personIdentityOrTravelDocumentExpiryDate	No	The expiry date shown on the referenced person's identity document.	an..35
IMO0102	personIdentityOrTravelDocumentIssuingNationCoded	No	A code representing the nation issuing the referenced person's presented identity or travel document.	a..2
IMO0103	personIdentityOrTravelDocumentNumber	No	The unique control number assigned to the referenced person's identity or travel document by the issuing nation.	an..70
IMO0104	personIdentityOrTravelDocumentTypeCoded	No	A code representing the type of the referenced person's presented identity or travel document.	an..3
IMO0105	personNationalityCoded	No	A code representing the nationality of the referenced person as shown on the person's identity or travel document.	a..2

IMO0106	personPlaceOfBirthName	No	The name of the referenced person's place of birth as shown on the person's identity or travel document.	an..35
IMO0108	portOfArrivalCoded	No	The code representing the port where the ship arrives.	an..5
IMO0109	portOfArrivalName	No	A name and country of the port where the ship arrives.	an..256
IMO0111	portOfDepartureCoded	No	The code representing the port from which the ship departs.	an..5
IMO0112	portOfDepartureName	No	A name and country of the port from which the ship departs.	an..256
IMO0128	authenticatorRoleCoded	No	A code providing the role of the person attesting to the validity of the transmitted information.	an..3
IMO0136	shipCallSign	No	A unique ship's identification used primarily for radio communications shown on the ship's IMO certificates.	an..7
IMO0138	shipFlagStateCoded	No	The code representing the nationality of the ship shown on its IMO ship's certificate.	a..2
IMO0140	shipImoNumber	No	The unique ship identification number shown on its IMO ship's certificate.	an..7
IMO0142	shipName	No	The ship's name shown on the IMO ship's certificates.	an..70
IMO0191	voyageNumber	No	An operator-assigned reference code for the ship's voyage.	an..17

### SAMPLE REQUEST & RESPONSE

<b>Curl Request</b>	<pre>curl -X GET --url 'https://abc.com/portclearance/form/FALForm5?portOfArrival=SGSIN&amp;shipimo=8814275&amp;portCallUniqueIdentifier=1234'</pre>
---------------------	--

<b>Response</b>	<pre> {   "agentCity": "Singapore",   "agentContactName": "Peter",   ....etc. } </pre>
-----------------	--

### 2.2.6 Port Clearance Data for FAL Form 6 (Passenger List)

<b>URL</b>	https://<domain>/portclearance/form/FALForm6?portOfArrival={portOfArrivalCode}&shipimo={shipImoNumber}&portCallUniqueIdentifier={portCallUniqueIdentifier}
<b>Description</b>	Receiving data regarding Passenger List (IMO Compendium FAL Form 6) for the given vessel and port call.

#### Request Details

Parameters	IMO Data Number	Name	Mandatory	Description	Format	Sample
	IMO0108	portOfArrivalCode	Yes	The UN/LOCODE representing the port where the ship arrives.	an..5	SGSIN
	IMO0140	shipImoNumber	Yes	Ship unique identifier.	n..7	8814275
	N/A	portCallUniqueIdentifier	Yes	The data producer's unique identifier to determine the relevant port call.	N/A	1234

#### Response Details

IMO Data Number	Name	Mandatory	Description	Format
-----------------	------	-----------	-------------	--------

IMO0002	agentContact Name	No	The agent's employee contact name.	an..70
IMO0007	agentIdentificationNumber	No	The recognized identification number used by the ship's agent at the port of notification.	an..17
IMO0010	agentName	No	The name of the agent at the port of arrival.	an..70
IMO0013	arrivalDepartureCode	No	A code in the message to show whether the information is submitted for the ship arrival or departure.	a..1
IMO0014	authenticationDate	No	The date of authentication.	an..35
IMO0016	authenticatorName	No	The name of the person attesting to the validity of the transmitted information.	an..70
IMO0063	dateAndTimeOfArrivalActual	No	The date and time the ship arrives at a specified location, ATA.	an..35
IMO0064	dateAndTimeOfArrivalEstimated	No	The date and time the ship is estimated to arrive at a specified location, ETA.	an..35
IMO0065	dateAndTimeOfDepartureActual	No	The date and time the ship departs from a specified location, ATD.	an..35
IMO0066	dateAndTimeOfDepartureEstimated	No	The date and time the ship is estimated to depart from a specified location, ETD.	an..35
IMO0089	personInTransitIndicator	No	A "yes/no" indicator of whether the referenced person is in transit to a foreign country.	n1
IMO0091	personPortOfEmbarkationCoded	No	The code representing the port from which the referenced person embarked the ship.	an..5
IMO0092	personPortOfDisembarkationName	No	The name of the port from which referenced person plans to disembark.	an..256
IMO0093	personPortOfDisembarkationCoded	No	The code representing the port from which the referenced person plans to disembark the ship.	an..5

IMO0094	personPortOfEmbarkationName	No	The name of the port from which referenced person embarked.	an..256
IMO0095	personVisaNumber	No	The unique number assigned to the referenced person's visa by the issuing nation.	an..70
IMO0096	personCountryOfBirthCode	No	The code representing the referenced person's country of birth as shown on the person's identity document.	a..2
IMO0097	personDateOfBirth	No	The referenced person's date of birth as shown on the person's identity document.	an..35
IMO0098	personFamilyName	No	The family name of the referenced person.	an..70
IMO0099	personGenderCoded	No	A code representing the gender of the referenced person.	an..3
IMO0100	personGivenName	No	The given name of the referenced person.	an..70
IMO0101	personIdentityOrTravelDocumentExpiryDate	No	The expiry date shown on the referenced person's identity document.	an..35
IMO0102	personIdentityOrTravelDocumentIssuingNationCoded	No	A code representing the nation issuing the referenced person's presented identity or travel document.	a..2
IMO0103	personIdentityOrTravelDocumentNumber	No	The unique control number assigned to the referenced person's identity or travel document by the issuing nation.	an..70
IMO0104	personIdentityOrTravelDocumentTypeCoded	No	A code representing the type of the referenced person's presented identity or travel document.	an..3
IMO0105	personNationalityCoded	No	A code representing the nationality of the referenced person as shown on the person's identity or travel document.	a..2

IMO0106	personPlaceOfBirthName	No	The name of the referenced person's place of birth as shown on the person's identity or travel document.	an..35
IMO0108	portOfArrivalCoded	No	The code representing the port where the ship arrives.	an..5
IMO0109	portOfArrivalName	No	A name and country of the port where the ship arrives.	an..256
IMO0111	portOfDepartureCoded	No	The code representing the port from which the ship departs.	an..5
IMO0112	portOfDepartureName	No	A name and country of the port from which the ship departs.	an..256
IMO0128	authenticatorRoleCoded	No	A code providing the role of the person attesting to the validity of the transmitted information.	an..3
IMO0136	shipCallSign	No	A unique ship's identification used primarily for radio communications shown on the ship's IMO certificates.	an..7
IMO0138	shipFlagStateCoded	No	The code representing the nationality of the ship shown on its IMO ship's certificate.	a..2
IMO0140	shipImoNumber	No	The unique ship identification number shown on its IMO ship's certificate.	an..7
IMO0142	shipName	No	The ship's name shown on the IMO ship's certificates.	an..70
IMO0191	voyageNumber	No	An operator-assigned reference code for the ship's voyage.	an..17

### SAMPLE REQUEST & RESPONSE

<b>Curl Request</b>	<pre>curl -X GET --url 'https://abc.com/portclearance/form/FALForm6?portOfArrival=SGSIN&amp;shipimo=8814275&amp;portCallUniqueIdentifier=1234'</pre>
---------------------	--

<b>Response</b>	<pre> {   "agentCity": "Singapore",   "agentContactName": "Peter",   ....etc. } </pre>
-----------------	--

### 2.2.7 Port Clearance Data for FAL Form 7 (Dangerous Goods Manifest)

<b>URL</b>	https://<domain>/portclearance/form/FALForm7?portOfArrival={portOfArrivalCode}&shipimo={shipImoNumber}&portCallUniqueIdentifier={portCallUniqueIdentifier}
<b>Description</b>	Receiving data regarding Dangerous Goods Manifest (IMO Compendium FAL Form 7) for the given vessel and port call.

#### Request Details

Parameters	IMO Data Number	Name	Mandatory	Description	Format	Sample
	IMO0108	portOfArrivalCode	Yes	The UN/LOCODE representing the port where the ship arrives.	an..5	SGSIN
	IMO0140	shipImoNumber	Yes	Ship unique identifier.	n..7	8814275
	N/A	portCallUniqueIdentifier	Yes	The data producer's unique identifier to determine the relevant port call.	N/A	1234

#### Response Details



IMO Data Number	Name	Mandatory	Description	Format
IMO0001	agentCity	No	The city of the referenced agent at port.	an..35
IMO0002	agentContact Name	No	The agent's employee contact name.	an..70
IMO0003	agentCountry Code	No	A code representing the country address of the referenced agent at port.	a..2
IMO0004	agentCountry SubDivisionName	No	The country sub-division of the referenced agent at port.	an..35
IMO0006	agentEmail	No	The email address for the referenced agent at port.	an..50
IMO0007	agentIdentificationNumber	No	The recognized identification number used by the ship's agent at the port of notification.	an..17
IMO0008	agentLandlineNumber	No	The landline telephone number for the referenced agent at port.	an..50
IMO0009	agentMobileNumber	No	The mobile number for the referenced agent at port.	an..50
IMO0010	agentName	No	The name of the agent at the port of arrival.	an..70
IMO0011	agentPostcode	No	An alphanumerical code representing the postal area of the referenced agent at port.	an..9
IMO0012	agentStreetAndNumberPO Box	No	The postal delivery point such as street and number or post office box of the referenced agent at port.	an..256
IMO0014	authenticationDate	No	The date of authentication.	an..35
IMO0015	authenticator Location	No	The location of the person when submitting the security-related information.	an..17

IMO0016	authenticatorName	No	The name of the person attesting to the validity of the transmitted information.	an..70
IMO0021	transportEquipmentIdentificationNumber	No	Marks (letters and/or numbers) which identify a transport equipment (e.g. containers, semi-trailers, swap bodies).	an..17
IMO0026	cargoItemMarksAndNumbers	No	An alphanumeric or symbolic identifier assigned by the shipper as a means to track cargo not carried in bulk.	an..512
IMO0045	stowagePositionOnboard	No	The position or place where goods such as dangerous goods are stored on board the ship.	Array, each element an..35
IMO0047	dangerousGoodsEmSNumber	No	The emergency schedule identified in the IMO EmS Guide – Emergency Response Procedures for Ships Carrying Dangerous Goods.	Array, each element an..6
IMO0048	dangerousGoodsFlashpoint	No	The flashpoint of the referenced dangerous goods according to the IMO IMDG Code expressed in degrees Celsius or Fahrenheit.	Array, each element n..8,2
IMO0049	dangerousGoodsHazardClassCode	No	The hazard class code of the referenced dangerous goods according to the specified regulation.	Array, each element an..7
IMO0051	dangerousGoodsMarinePollutantTypeCode	No	A code representing the type of marine pollutant properties for the referenced dangerous goods from the IMO IMDG Code or IBC Code / MARPOL Convention.	Array, each element an..3
IMO0052	dangerousGoodsMass	No	The mass of the referenced dangerous goods.	Array, each element n..16,6

IMO0053	dangerousGoodsNumberOfPackages	No	The count of the number of packages of the referenced dangerous goods.	Array, each element n..8
IMO0054	dangerousGoodsPackingGroup	No	The packing group according to the UN Recommendations on the Transport of Dangerous Goods and IMO IMDG Code.	Array, each element an..3
IMO0055	dangerousGoodsProperShippingName	No	The proper shipping name for goods under IMDG Code, or the product name for goods under IBC Code and IGC Code, or the bulk cargo shipping name for goods under IMSBC Code, or the name of oil for goods under Annex I to the MARPOL Convention.	Array, each element an..256
IMO0056	dangerousGoodsShipperReferenceNumber	No	A number assigned by the shipper to track the referenced dangerous goods.	Array, each element an..70
IMO0058	dangerousGoodsSecondaryRisksCoded	No	Any risk in addition to the class of the referenced dangerous goods according to the IMO IMDG Code.	Array, each element an..4
IMO0059	dangerousGoodsTechnicalSpecifications	No	The recognized chemical or biological name or other name currently used for the referenced dangerous goods.	Array, each element an..256
IMO0060	dangerousGoodsUndgNumber	No	United Nations Dangerous Goods Identifier (UNDG) assigned by the UN Sub-Committee of Experts on the Transport of Dangerous Goods and shown in the IMO IMDG.	Array, each element n4
IMO0061	dangerousGoodsVolume	No	The volume of the referenced dangerous goods.	Array, each element n..16,6

IMO0077	measurement UnitCoded	No	A code representing the units of measured for a referenced quantity on board, such as crew's effects, ship's stores, and cargo.	Array, each element an..3
IMO0113	portOfDischargeCoded	No	The code representing the port of discharge for the referenced cargo.	an..5
IMO0114	portOfDischargeName	No	The name and country of the port of discharge for the referenced cargo.	an..256
IMO0117	portOfLoadingCoded	No	The code representing the port of loading for the referenced cargo.	an..5
IMO0118	portOfLoadingName	No	The name and country of the port where the cargo was loaded on board the ship.	an..256
IMO0128	authenticator RoleCoded	No	A code providing the role of the person attesting to the validity of the transmitted information.	an..3
IMO0136	shipCallSign	No	A unique ship's identification used primarily for radio communications shown on the ship's IMO certificates.	an..7
IMO0138	shipFlagState Coded	No	The code representing the nationality of the ship shown on its IMO ship's certificate.	a..2
IMO0140	shipImoNumber	No	The unique ship identification number shown on its IMO ship's certificate.	an..7
IMO0142	shipName	No	The ship's name shown on the IMO ship's certificates.	an..70
IMO0186	dangerousGoodsAdditional Information	No	A statement of any other information relevant to the characteristics or hazards of the referenced dangerous goods cargo item.	an..256
IMO0187	dangerousGoodsPackageTypeCoded	No	A code representing the package type of the referenced dangerous goods.	an..2

IMO0191	voyageNumber	No	An operator-assigned reference code for the ship's voyage.	an..17
IMO0197	vehicleIdentificationNumberVin	No	An alphanumeric identifier assigned by the shipper to identify a vehicle for tracking purposes.	an..17

**SAMPLE REQUEST & RESPONSE**

<b>Curl Request</b>	<pre>curl -X GET --url 'https://abc.com/portclearance/form/FALForm7?portOfArrival=SGSIN&amp;shipimo=8814275&amp;portCallUniqueIdentifier=1234'</pre>
<b>Response</b>	<pre>{   "agentCity": "Singapore",   "agentContactName": "Peter",   ....etc. }</pre>

**2.2.8 Port Clearance Data for FAL Form 8 (Security Report)**

<b>URL</b>	https://<domain>/portclearance/form/FALForm8?portOfArrival={portOfArrivalCode}&shipimo={shipImoNumber}&portCallUniqueIdentifier={portCallUniqueIdentifier}					
<b>Description</b>	Receiving data regarding Security Report (IMO Compendium FAL Form 8) for the given vessel and port call.					
<b>Request Details</b>						
	<b>IMO Data Number</b>	<b>Name</b>	<b>Mandatory</b>	<b>Description</b>	<b>Format</b>	<b>Sample</b>

<b>Parameters</b>	IMO0108	portOfArrivalCode	Yes	The UN/LOCODE representing the port where the ship arrives.	an..5	SGSIN
	IMO0140	shipImoNumber	Yes	Ship unique identifier.	n..7	8814275
	N/A	portCallUniqueIdentifier	Yes	The data producer's unique identifier to determine the relevant port call.	N/A	1234

<b>Response Details</b>				
<b>IMO Data Number</b>	<b>Name</b>	<b>Mandatory</b>	<b>Description</b>	<b>Format</b>
IMO0001	agentCity	No	The city of the referenced agent at port.	an..35
IMO0002	agentContact Name	No	The agent's employee contact name.	an..70
IMO0003	agentCountry Code	No	A code representing the country address of the referenced agent at port.	a..2
IMO0004	agentCountry SubDivisionName	No	The country sub-division of the referenced agent at port.	an..35
IMO0006	agentEmail	No	The email address for the referenced agent at port.	an..50
IMO0007	agentIdentificationNumber	No	The recognized identification number used by the ship's agent at the port of notification.	an..17
IMO0008	agentLandline Number	No	The landline telephone number for the referenced agent at port.	an..50
IMO0009	agentMobileNumber	No	The mobile number for the referenced agent at port.	an..50

IMO0010	agentName	No	The name of the agent at the port of arrival.	an..70
IMO0011	agentPostcode	No	An alphanumerical code representing the postal area of the referenced agent at port.	an..9
IMO0012	agentStreetAndNumberPO Box	No	The postal delivery point such as street and number or post office box of the referenced agent at port.	an..256
IMO0014	authentication Date	No	The date of authentication.	an..35
IMO0016	authenticator Name	No	The name of the person attesting to the validity of the transmitted information.	an..70
IMO0019	cargoBriefDescription	No	A description of the type of cargo carried on the ship in general terms.	an..256
IMO0031	imoCompany Number	No	The unique company identification number shown in the Continuous Synopsis Record (CSR)	an..17
IMO0032	imoCompany Name	No	The name of the Company shown in the Continuous Synopsis Record (CSR).	an..70
IMO0033	companySecurityOfficerEmail	No	The contact email address for the company security officer shown in the ship security plan.	an..50
IMO0034	companySecurityOfficerLandlineNumber	No	The contact landline number for the company security officer shown in the ship security plan.	an..50
IMO0035	companySecurityOfficerMobileNumber	No	The contact mobile number for the company security officer shown in the ship security plan.	an..50
IMO0036	companySecurityOfficerName	No	The name of the company security officer shown in the ship security plan.	an..70

IMO0046	dangerousGoodsCarriedIndicator	No	A "yes/no" indicator whether the ship is carrying any dangerous goods.	n1
IMO0063	dateAndTimeOfArrivalActual	No	The date and time the ship arrives at a specified location, ATA.	an..35
IMO0064	dateAndTimeOfArrivalEstimated	No	The date and time the ship is estimated to arrive at a specified location, ETA.	an..35
IMO0067	isscStatusCoded	No	An indicator of whether the ship has a valid Interim International Ship Security Certificate or valid International Ship Security Certificate.	n1
IMO0068	reasonWhyShipHasNoValidIsscOrInterimIssc	No	The explanation of why the ship is not provided with a valid ISSC or a valid interim ISSC.	an..512
IMO0069	reasonWhyShipHasNoValidIsscOrInterimIsscCoded	No	A coded explanation of why the ship is not provided with a valid ISSC or a valid interim ISSC.	an..3
IMO0070	certificateIssuerFlagStateCoded	No	The code representing the country of the flag that issued the certificate.	a..2
IMO0071	isscExpiryDate	No	The expiry date shown on the ISSC or Interim ISSC.	an..35
IMO0108	portOfArrivalCoded	No	The code representing the port where the ship arrives.	an..5
IMO0109	portOfArrivalName	No	A name and country of the port where the ship arrives.	an..256
IMO0110	portOfCallSequenceNumber	No	A number indicating the order of a port of call on a list.	n..5



IMO0124	previousPortFacilityCallStartDate	No	The start date of a previous port facility call.	an..35
IMO0125	previousPortFacilityCallEndDate	No	The end date of a previous port facility call.	an..35
IMO0126	previousPortOfCallName	No	A list of names and countries of the previous 10 port of calls.	Array an..256
IMO0127	previousPortOfCallCoded	No	A list of codes representing a previous 10 port of calls.	Array an..5
IMO0128	authenticatorRoleCoded	No	A code providing the role of the person attesting to the validity of the transmitted information.	an..3
IMO0129	certificateIssuerName	No	Name of the body/organization that issued the certificate (in case it is a notified body, an insurance company or other).	an..70
IMO0130	securityPlanApprovalIndicator	No	A "yes/no" indicator of whether the ship is provided with an approved security plan on board.	n1
IMO0131	securityOtherMattersToReport	No	An explanation of any other security-related matters to report.	an..512
IMO0133	shipAdditionalSecurityMeasuresCoded	No	A code representing a description of special or additional security measures applied in lieu of those in the security plan.	an..3
IMO0135	shipAdditionalSecurityMeasuresDescription	No	The description of special or additional security measures applied in lieu of those in the security plan.	an..512
IMO0136	shipCallSign	No	A unique ship's identification used primarily for radio communications shown on the ship's IMO certificates.	an..7

IMO0137	shipCurrentSecurityLevelCoded	No	A code representing the security level of the ship in the port of arrival as defined by the ISPS Code.	an..3
IMO0138	shipFlagStateCoded	No	The code representing the nationality of the ship shown on its IMO ship's certificate.	a..2
IMO0139	shipGrossTonnage	No	The gross tonnage shown on the ship's International Tonnage Certificate or other document issued by the Flag State or Recognized Organization.	n..14,3
IMO0140	shipImoNumber	No	The unique ship identification number shown on its IMO ship's certificate.	an..7
IMO0141	shipSatelliteServiceNumber	No	The unique recognized mobile satellite service call number assigned to the ship by the operator and recorded in the operator's ship directory where provided.	n..14
IMO0142	shipName	No	The ship's name shown on the IMO ship's certificates.	an..70
IMO0147	shipRegistryPortCoded	No	A code representing the port of registry shown on the IMO ship certificate.	an..5
IMO0148	shipRegistryPortName	No	The name and country for the Port of Registry shown on the IMO ship certificate.	an..256
IMO0149	shipSecurityLevelInAPreviousPortCoded	No	A code representing the security level of the ship in a previous port as defined by the ISPS Code.	an..3
IMO0150	shipSecurityMeasuresCoded	No	A code representing the security measures taken during ship-to-ship activity by the ship in lieu of the ship security procedures.	an..3
IMO0151	shipSecurityMeasures	No	A description of the security measures taken during ship-to-ship activity by the ship in lieu of the ship security procedures.	an..256
IMO0160	shipTypeCoded	No	The type of the ship shown on its IMO ship's certificate.	an..4

IMO0161	shipToShipActivityCoded	No	A code representing the ship-to-ship activity which has been carried out during the period of the last ten calls.	an..3
IMO0162	shipToShipActivity	No	A description of the ship-to-ship activity which has been carried out during the period of the last ten calls.	an..512
IMO0163	shipToShipActivityEndDate	No	The end date of the ship-to-ship activity which has been carried out during the period of the last ten calls.	an..35
IMO0164	shipToShipActivityLocationName	No	The name and country to describe where the ship-to-ship activity has been carried out during the period of the last ten calls.	an..256
IMO0165	shipToShipActivitySequenceNumber	No	A number showing the order of ship-to-ship activity which has been carried out during the period of the last ten calls.	n..5
IMO0166	shipToShipActivityStartDate	No	The start date of the ship-to-ship activity which has been carried out during the period of the last ten calls.	an..35
IMO0167	shipToShipActivityLocationCoded	No	A code representing the location of the ship-to-ship activity which has been carried out during the period of the last ten calls.	an..5
IMO0172	primaryPurposeOfCallCode	No	A code representing the primary reason for the ship to enter the referenced port.	an..3
IMO0184	portFacilityCoded	No	A code representing the port facility at the port of call.	an..17
IMO0185	portFacilityName	No	The name and country of a port facility at the port of call.	an..256
IMO0188	previousPortFacilityName	No	The name and country of a previous port facility called at during a previous port call.	an..256

IMO0189	previousPortFacilityCoded	No	A code representing a previous port facility called at during a previous port call.	an..17
IMO0194	shipToShipActivityLocationLatitude	No	The latitude (geographical coordinate) of the location of the ship-to-ship activity which has been carried out during the period of the last ten calls.	an..10
IMO0195	shipToShipActivityLocationLongitude	No	The longitude (geographical coordinate) of the location of the ship-to-ship activity which has been carried out during the period of the last ten calls.	an..11

### SAMPLE REQUEST & RESPONSE

<b>Curl Request</b>	<pre>curl -X GET --url 'https://abc.com/portclearance/form/FALForm8?portOfArrival=SGSIN&amp;shipimo=8814275&amp;portCallUniqueIdentifier=1234'</pre>
<b>Response</b>	<pre>{   "agentCity": "Singapore",   "agentContactName": "Peter",   ....etc. }</pre>

### 2.2.9 Port Clearance Data for FAL Form 9 (Waste Deliver in Port)

<b>URL</b>	https://<domain>/portclearance/form/FALForm9?portOfArrival={portOfArrivalCode}&shipimo={shipImoNumber}&portCallUniqueIdentifier={portCallUniqueIdentifier}					
<b>Description</b>	Receiving data regarding Waste Delivery in Port (IMO Compendium FAL Form 9) for the given vessel and port call.					
<b>Request Details</b>						
	<b>IMO Data Number</b>	<b>Name</b>	<b>Mandatory</b>	<b>Description</b>	<b>Format</b>	<b>Sample</b>

<b>Parameters</b>	IMO0108	portOfArrivalCode	Yes	The UN/LOCODE representing the port where the ship arrives.	an..5	SGSIN
	IMO0140	shipImoNumber	Yes	Ship unique identifier.	n..7	8814275
	N/A	portCallUniqueIdentifier	Yes	The data producer's unique identifier to determine the relevant port call.	N/A	1234

<b>Response Details</b>				
<b>IMO Data Number</b>	<b>Name</b>	<b>Mandatory</b>	<b>Description</b>	<b>Format</b>
IMO0014	authenticationDate	No	The date of authentication.	an..35
IMO0015	authenticatorLocation	No	The location of the person when submitting the security-related information.	an..17
IMO0016	authenticatorName	No	The name of the person attesting to the validity of the transmitted information.	an..70
IMO0032	imoCompanyName	No	The name of the Company shown in the Continuous Synopsis Record (CSR).	an..70
IMO0063	dateAndTimeOfArrivalActual	No	The date and time the ship arrives at a specified location, ATA.	an..35
IMO0064	dateAndTimeOfArrivalEstimated	No	The date and time the ship is estimated to arrive at a specified location, ETA.	an..35
IMO0065	dateAndTimeOfDepartureActual	No	The date and time the ship departs from a specified location, ATD.	an..35
IMO0066	dateAndTimeOfDepartureEstimated	No	The date and time the ship is estimated to depart from a specified location, ETD.	an..35

IMO0077	measurement UnitCoded	No	A code representing the units of measured for a referenced quantity on board, such as crew's effects, ship's stores, and cargo.	an..3
IMO0084	nextPortOfCa llCoded	No	The port immediately subsequent to the port of departure.	an..5
IMO0085	nextPortOfCa llName	No	The name and country of the port immediately subsequent to the port of departure.	an..256
IMO0108	portOfArrival Coded	No	The code representing the port where the ship arrives.	an..5
IMO0109	portOfArrival Name	No	A name and country of the port where the ship arrives.	an..256
IMO0115	portOfLastWa steDeliveryN ame	No	The name and country of the last port where waste of any type was delivered.	an..256
IMO0116	portOfLastWa steDeliveryC oded	No	The code representing the last port where waste of any type was delivered.	an..5
IMO0119	portOfNextW asteDelivery Name	No	The name and country of the next port where the ship plans to deliver waste of any type.	an..256
IMO0120	portOfNextW asteDelivery Coded	No	The code representing the next port where the ship plans to deliver waste of any type.	an..5
IMO0121	portOfRemai ningWasteDe liveryCoded	No	The code representing the port where the ship intends to deliver the remaining waste.	an..5
IMO0122	portOfRemai ningWasteDe liveryName	No	The name and country of the port where the ship intends to deliver the remaining waste.	an..256
IMO0128	authenticator RoleCoded	No	A code providing the role of the person attesting to the validity of the transmitted information.	an..3
IMO0136	shipCallSign	No	A unique ship's identification used primarily for radio communications shown on the ship's IMO certificates.	an..7

IMO0138	shipFlagState Coded	No	The code representing the nationality of the ship shown on its IMO ship's certificate.	a..2
IMO0139	shipGrossTonnage	No	The gross tonnage shown on the ship's International Tonnage Certificate or other document issued by the Flag State or Recognized Organization.	n..14,3
IMO0140	shipImoNumber	No	The unique ship identification number shown on its IMO ship's certificate.	an..7
IMO0142	shipName	No	The ship's name shown on the IMO ship's certificates.	an..70
IMO0144	locationInPort	No	The name of the berth, terminal or station where the ship is located in the referenced port.	an..70
IMO0160	shipTypeCoded	No	The type of the ship shown on its IMO ship's certificate.	an..4
IMO0173	wasteEstimatedAmountToBeGenerated	No	The estimated volume of waste to be generated between notification and next port of call (m3).	n..16,6
IMO0174	wasteAmountToBeDelivered	No	The volume of waste the ship plans to deliver (m3).	n..16,6
IMO0175	wasteAmountRetained	No	The volume of waste the ship plans to retain on board (m3).	n..16,6
IMO0178	allWasteDeliveryIndicator	No	A "yes/no" indicator of whether the ship is delivering all waste on board the ship.	n1
IMO0179	wasteLastDeliveryDate	No	The last date when waste of any type was delivered.	an..35
IMO0180	wasteMaximumDedicatedStorageCapacity	No	Maximum dedicated storage capacity on board for this type of waste in cubic metres (m3).	n..16,6
IMO0181	wasteReceptionFacilityPointOfContact	No	The name of the person to contact at the waste reception facility regarding ship waste delivery.	an..70
IMO0183	wasteTypeCoded	No	A code representing the type of waste being delivered.	an..3

IMO0190	wasteDescription	No	Additional description of the waste being delivered	an..256
---------	------------------	----	---	---------

### SAMPLE REQUEST & RESPONSE

<b>Curl Request</b>	<pre>curl -X GET --url 'https://abc.com/portclearance/form/FALForm9?portOfArrival=SGSIN&amp;shipimo=8814275&amp;portCallUniqueIdentifier=1234'</pre>
<b>Response</b>	<pre>{   "agentCity":"Singapore",   "agentContactName":"Peter",   ...etc. }</pre>

## 3 Annex

### 3.1 Error Message Structure

The structure of the error messages returned should follow the implementation defined in the [DCSA Error Domain](#).

A sample of the error message is shown below.



```

error {
  httpMethod*      string
                   example: POST
                   The HTTP request method type

  requestUri*      string
                   example: https://dcsa.org/dcsa/tnt/v1/events
                   The request URI.

  errors*          subErrors {
    reason*         string
                   example: invalidQuery
                   High level error message.

    message*        string
                   example: The request did not contain one of the
                   three required query parameters.
                   Detailed error message.

  }

  statusCode*      integer
                   example: 400
                   The HTTP status code

  statusCodeText*  string
                   example: Bad Request
                   The textual representation of the response status.

  errorDateTime*  string(SSdate-time)
                   example: 2019-11-12T07:41:00+08:30
                   The date and time (in ISO 8601 format) the error occurred.
}

```

Figure 3. Extract from DCSA Error Domain

### 3.2 HTTP Response Code

HTTP status codes to be returned should follow the standards defined in [RFC2616](https://tools.ietf.org/html/rfc2616). A list of commonly used codes is shown in the table below.

HTTP Status Code	Description
200	Ok
201	Created
400	Bad Request
401	Unauthorized
403	Forbidden
404	Not Found
500	Internal Server Error
502	Bad Gateway
503	Service Unavailable
504	Gateway Timeout

Table 2. HTTP Status Codes